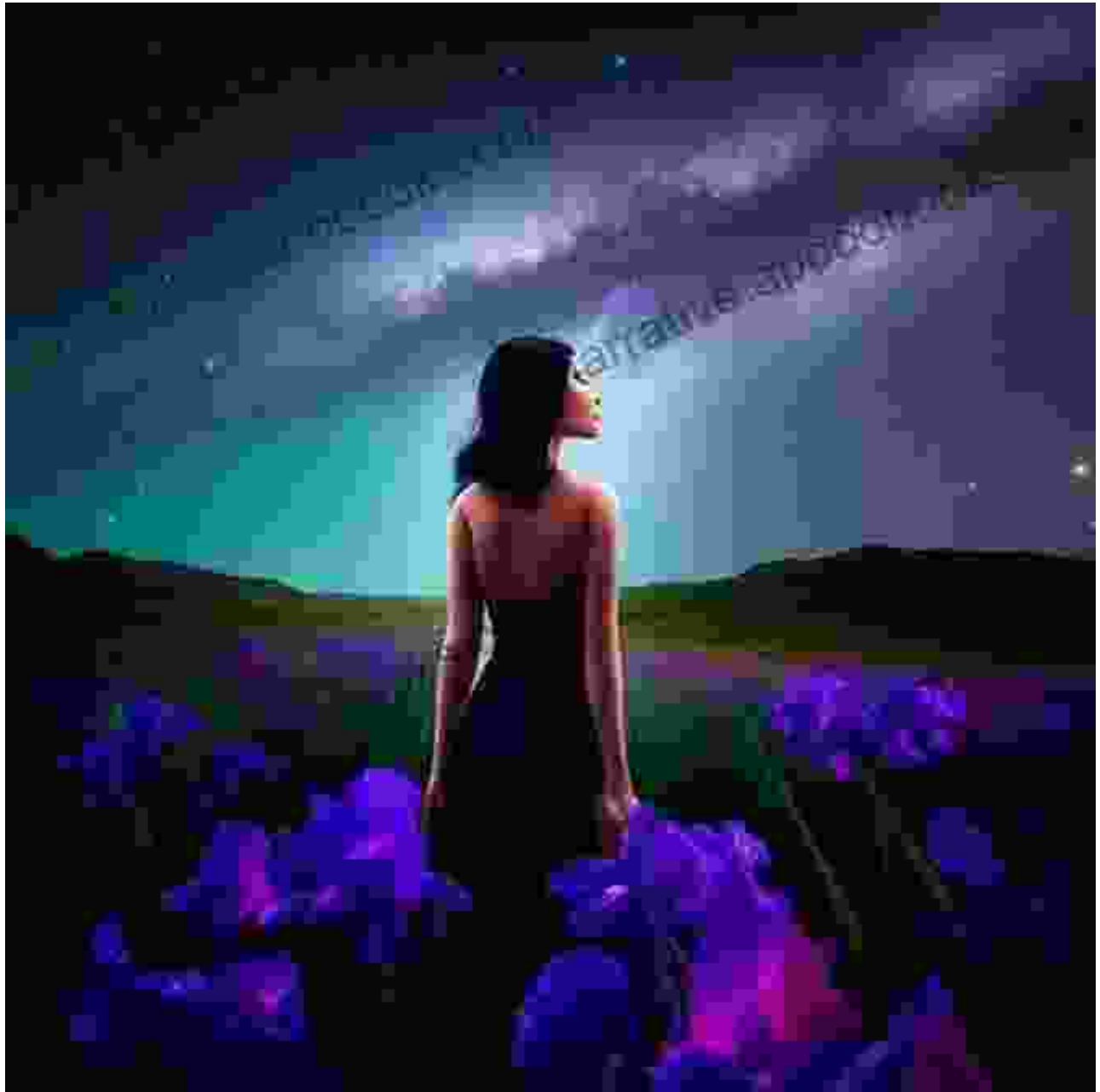


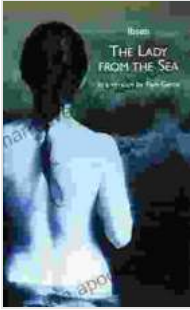
# Unveiling the Enigmatic Sea Lady: A Captivating Dive into 'The Lady from the Sea'

Prologue: A Glimpse into the Enigmatic Realm



**The Lady from the Sea (Oberon Modern Plays)**

by Samuel Taylor Coleridge



★ ★ ★ ★ ☆	4 out of 5
Item Weight	: 9.9 ounces
Language	: English
File size	: 323 KB
Text-to-Speech	: Enabled
Screen Reader	: Supported
Enhanced typesetting	: Enabled
Word Wise	: Enabled
Print length	: 93 pages



Henrik Ibsen's 'The Lady from the Sea' is a captivating masterpiece that transports readers to a realm of mystery, symbolism, and psychological exploration. The play, first performed in 1888, has captivated audiences with its enigmatic characters, haunting imagery, and exploration of the complexities of human nature.

### **Delving into the Depths of Character**

At the heart of the play lies Ellida Wangel, a woman haunted by her past and torn between two worlds. Married to the lighthouse keeper Wangel, Ellida yearns for the unknown, symbolized by the mysterious stranger who arrives from the depths of the sea.

Each character embodies a distinct facet of the human psyche. Wangel represents stability and tradition, while the Stranger embodies the allure of the unknown and uncharted. Other characters, such as Bolette and Arnholm, provide insight into the complexities of family dynamics and societal norms.

### **Unraveling the Tapestry of Symbolism**

The sea is a central symbol in the play, representing the vastness of the unknown and the unfathomable depths of the human heart. Ellida's connection to the sea mirrors her own inner turmoil, as she struggles to reconcile her past with her present.

Other symbols, such as the lighthouse and the wedding ring, further enhance the play's allegorical nature. The lighthouse symbolizes hope and guidance, while the wedding ring represents both the constraints and possibilities of marriage.

## **Exploring Timeless Themes**

Beneath its captivating characters and symbolism, 'The Lady from the Sea' delves into profound themes that have resonated with audiences for centuries.

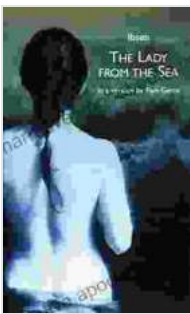
- **Female Empowerment:** Ellida's journey represents a struggle for independence and self-discovery in a society that often suppresses women.
- **The Conflict Between Duty and Desire:** Ellida is torn between her responsibilities as a wife and mother and her longing for a life of freedom.
- **The Power of the Past:** Ellida's past trauma continues to haunt her, shaping her present and influencing her choices.

## **A Literary Voyage of Discovery**

'The Lady from the Sea' is a literary masterpiece that invites readers to embark on a voyage of discovery. It is a play that challenges our understanding of human nature, explores the boundaries of the unknown,

and celebrates the indomitable spirit of those who dare to venture beyond the confines of society.

, Henrik Ibsen's 'The Lady from the Sea' is a captivating and thought-provoking work that continues to resonate with audiences today. Its unforgettable characters, rich symbolism, and timeless themes make it a must-read for anyone seeking an immersive and transformative literary experience.



## The Lady from the Sea (Oberon Modern Plays)

by Samuel Taylor Coleridge

★★★★☆ 4 out of 5

Item Weight : 9.9 ounces

Language : English

File size : 323 KB

Text-to-Speech : Enabled

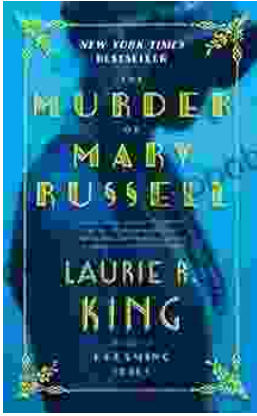
Screen Reader : Supported

Enhanced typesetting : Enabled

Word Wise : Enabled

Print length : 93 pages





## Unravel the Enigmatic Murder of Mary Russell: A Captivating Tale of Suspense and Intrigue

Prologue: A Grisly Discovery In the quaint and seemingly idyllic town of Cranford, a gruesome discovery sends shockwaves through the community. The lifeless body of Mary...



## Little Quilts: Gifts from Jelly Roll Scraps

Embrace the Art of Transforming Jelly Roll Scraps into Exquisite Quilts  
Unveiling 'Little Quilts: Gifts from Jelly Roll Scraps', an...